

**SR 15i**

**VERSATILE - RELIABLE - POWERFUL**

SEALED CO<sub>2</sub> LASER

Rofin-Sinar UK is one of the world's leading designers and manufacturers of industrial lasers. The company has more than 15,000 lasers installed in a wide variety of laser processing applications and industries worldwide.

The SR 15i incorporates proven RF excited slab laser design with the latest leading edge technologies to give:

- A high quality, round symmetrical beam for high processing speeds
- A short optical pulse with high peak power for improved edge quality and minimal heat affected zone (HAZ)
- An IP66 rated system capable of operating in the harshest of industrial environments
- A compact design with integrated and field replaceable RF module for simple integration and servicing
- A minimum shipment power 20% higher than rated power to ensure extended sealed lifetime
- A typical power stability of 1% using optional power feedback control and well defined wavelength to ensure a high level of process repeatability
- Safety performance level D (EN13849) as specified in the latest European Standards

The SR 15i is supported by our global network of service centres and technicians worldwide



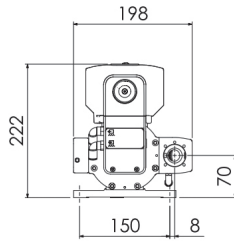
Rofin-Sinar UK Ltd.  
Meadow Road,  
Bridgehead Business Park,  
Kingston Upon Hull,  
HU13 0DG

United Kingdom

Tel: +44 1482 650088  
Fax: +44 1482 650022  
Email: sales@rofin-sinar.uk

## Applications..

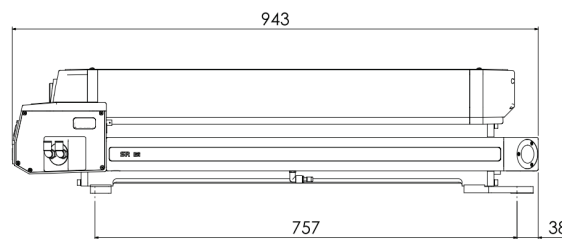
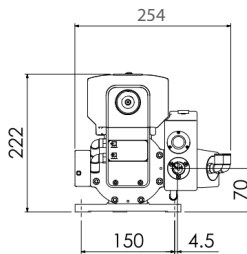
- Cutting
- Drilling
- Marking
- Engraving
- Scribing
- Perforating
- Welding
- Kiss Cutting



Standard System

## Materials..

- Rubber
- Plastic/Polymer
- Acrylic
- Glass
- Textiles
- Wood
- Ceramics
- Thin Sheet Metal
- FR4



Power Feedback with Shutter System

[WWW.ROFIN-SINAR.UK](http://WWW.ROFIN-SINAR.UK)

Distributed by:



CAUTION  
CLASS 4 LASER PRODUCT  
EN60825-1:2014

Please note that while every effort has been made to ensure that the data given in this document is accurate, due to a policy of continuous improvement, the information, figures, illustrations, tables, specification and schematics contained herein are subject to change without notice.

### Specification

	10.6	9.3
Power range	10 to 175W	10 to 130W
Minimum shipment power	210W	160W
Peak laser output power	>445W	>340W
Wavelength	10.6µm	9.3µm
Typical stability (long term)	< ± 3%, < ± 6% guaranteed < ± 1%, < ± 2% guaranteed (Power Feedback)*	
Beam diameter	6.8mm ± 0.5mm - (1/e <sup>2</sup> ) at laser output optic	6.0mm ± 0.5mm
Polarisation	Linear parallel to base, purity > 100:1	
Weight	32 kg 33.9 kg with Shutter/Power Feedback module	
Voltage	50 VDC +/- 1%	
Peak RF input current	120A	
Maximum average input current	72A	
Optical rise/fall time	<60µs	
Pulse width	2-400µs	
Pulse frequency	0-130kHz	

\* Power feedback turn on response is typically 300 - 500 milliseconds.

Copyright © 2018  
Rofin-Sinar UK Ltd



903-0169-00 Rev 10