

**SR 25i**

**VERSATILE - RELIABLE - POWERFUL**

SEALED CO<sub>2</sub> LASER

Rofin-Sinar UK is one of the world's leading designers and manufacturers of industrial lasers. The company has more than 15,000 lasers installed in a wide variety of laser processing applications and industries worldwide.

The SR 25i incorporates proven RF excited slab laser design with the latest leading edge technologies to give:

- A high quality, round symmetrical beam for high processing speeds
- A short optical pulse with high peak power for improved edge quality and minimal heat affected zone (HAZ)
- An IP66 rated system capable of operating in the harshest of industrial environments
- A compact design with integrated and field replaceable RF module for simple integration and servicing
- A minimum shipment power 20% higher than rated power to ensure extended sealed lifetime
- A typical power stability of 1% using optional power feedback control and well defined wavelength to ensure a high level of process repeatability
- Safety performance level D (EN13849) as specified in the latest European Standards

The SR 25i is supported by our global network of service centres and technicians worldwide.



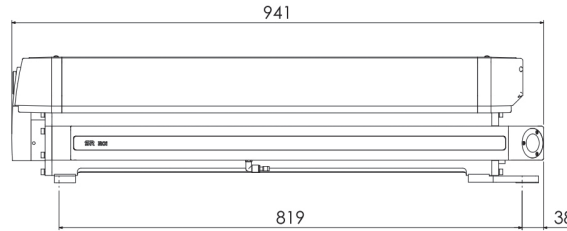
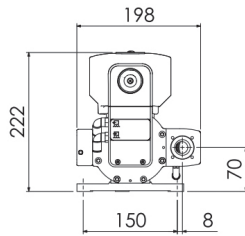
Rofin-Sinar UK Ltd.  
Meadow Road,  
Bridgehead Business Park,  
Kingston Upon Hull,  
HU13 0DG

United Kingdom

Tel: +44 1482 650088  
Fax: +44 1482 650022  
Email: sales@rofin-sinar.uk

## Applications..

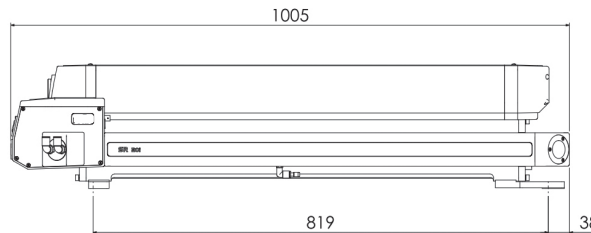
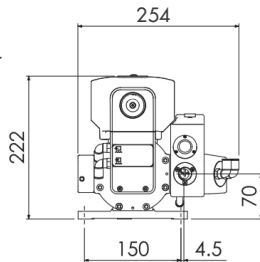
- Cutting
- Drilling
- Marking
- Engraving
- Scribing
- Perforating
- Welding
- Kiss Cutting



Standard System

## Materials..

- Rubber
- Plastic/Polymer
- Acrylic
- Glass
- Textiles
- Wood
- Ceramics
- Thin Sheet Metal
- FR4



Power Feedback with Shutter System

[WWW.ROFIN-SINAR.UK](http://WWW.ROFIN-SINAR.UK)

Distributed by:



Please note that while every effort has been made to ensure that the data given in this document is accurate, due to a policy of continuous improvement, the information, figures, illustrations, tables, specification and schematics contained herein are subject to change without notice.

Specification	10.6	10.25	9.3
Power range	15 to 250W	15 to 225W	10 to 185W
Minimum shipment power	300W	270W	225W
Peak laser output power	>630W	>570	>475W
Wavelength	10.6µm	10.25µm	9.3µm
Typical stability (long term)	< ± 3%, < ± 6% guaranteed < ± 1%, < ± 2% guaranteed (Power Feedback)*		
Beam diameter	6.5mm ± 0.5mm - (1/e <sup>2</sup> ) at laser output optic	6.5mm ± 0.5mm	6.3mm ± 0.5mm
Polarisation	Linear parallel to base, purity > 100:1		
Weight	34 kg 35.9 kg with Shutter/Power Feedback		
Voltage	50 VDC +/- 1%		
Peak RF input current	160A		
Maximum average input current	96A		
Optical rise/fall time	<60µs		
Pulse width	2-400µs		
Pulse frequency	0-130kHz		

\* Power feedback turn on response is typically 300 - 500 milliseconds.

Copyright © 2018  
Rofin-Sinar UK Ltd



903-0167-00 Rev 10