

# Multiscan VS

## Static or 'on the fly' Vector Marking

The ROFIN MULTISCAN VS has been specifically developed to enable simple alphanumeric and/or complex marks containing graphics to be applied to a wide variety of materials. The system can mark stationary items or moving products that need to be coded 'on the fly'. The flexible software allows intelligent data to be placed anywhere within the specified scan area. It also offers an optional facility to generate and download complex graphics and can also produce two-dimensional or traditional bar codes.



- Highest quality vector generation... precise reproduction of graphics
- Large scan area...large format codes or enhanced 'on the fly' marking
- Perfect line tracking, low maintenance ...fit and forget
- Advanced curve profiling...accurate scaling of complex drawings and fonts
- Static or 'on the fly' marking capability...flexibility for your current or future marking needs



**The Multiscan VS**

## SPECIFICATIONS

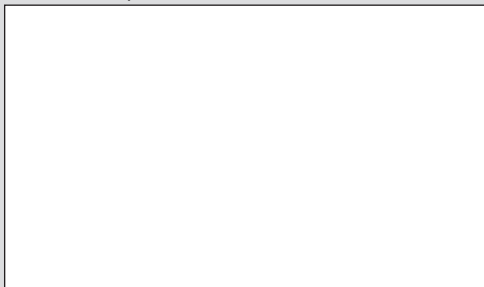
|                                |   |
|--------------------------------|---|
| <b>Laser</b>                   | <b>Single sealed CO<sub>2</sub>, RF excited SLAB</b>  |
| <b>Average coding power</b>    | <b>120 watts (max)</b>  |
| <b>Maximum characters/sec.</b> | <b>Up to 1000 (2mm high characters)</b>   |
| <b>Beam delivery</b>           | <b>Articulated and special options available</b>  |
| <b>Marking Head</b>            | <b>Dual axis scanner</b>  |
| <b>Scan area</b>               | <b>70mm x 70mm — 250mm x 250mm</b>  |
| <b>Cooling</b>                 | <b>Integral (air to water)*</b>   |
| <b>Sealing</b>                 | <b>IP56</b>   |
| <b>Voltage</b>                 | <b>200-240v 50/60 Hz Single or Bi-phase</b>   |
| <b>Software</b>                | <b>Windows operating system.<br/>Programmable date/time with offset, custom date, sequential, password protection, logos etc.</b> |
| <b>Control</b>                 | <b>Integral QWERTY keypad and 1/4 VGA display,<br/>remote keypad optional</b>   |

\*Optional Closed cycle/mains water for high duty cycle applications.

**ROFIN** is one of the world's leading designers and manufacturers of industrial lasers. The company has more than 25,000 laser units installed world-wide and serves more than 3,000 customers in a wide variety of applications and industry sectors.



Distributed by:



**rofin**

Rofin-Sinar UK Ltd.  
York Way, Willerby  
Kingston upon Hull  
HU10 6HD  
United Kingdom  
T: +44 1482 650088  
F: +44 1482 650022  
E: sales@rofin-uk.com  
W: www.rofin.com

## Marked examples



**Glass**



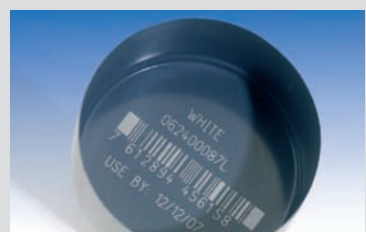
**Carton**



**PVC**



**Plastic**



**Painted Metal**



**Crystal**

© Rofin-Sinar UK Ltd., April 2007.

Please note that while every effort has been made to ensure that the data given in this document is accurate, due to a policy of continuous improvement, the information, figures, illustrations, tables, specification and schematics contained herein are subject to change without notice.

ENG 903-0059-00 Rev C.